



# EPS

## Expanded Polystyrene will do it all for you!

All EPSASA Grades are Fire Retardant

Thermal Insulation

Cold Rooms

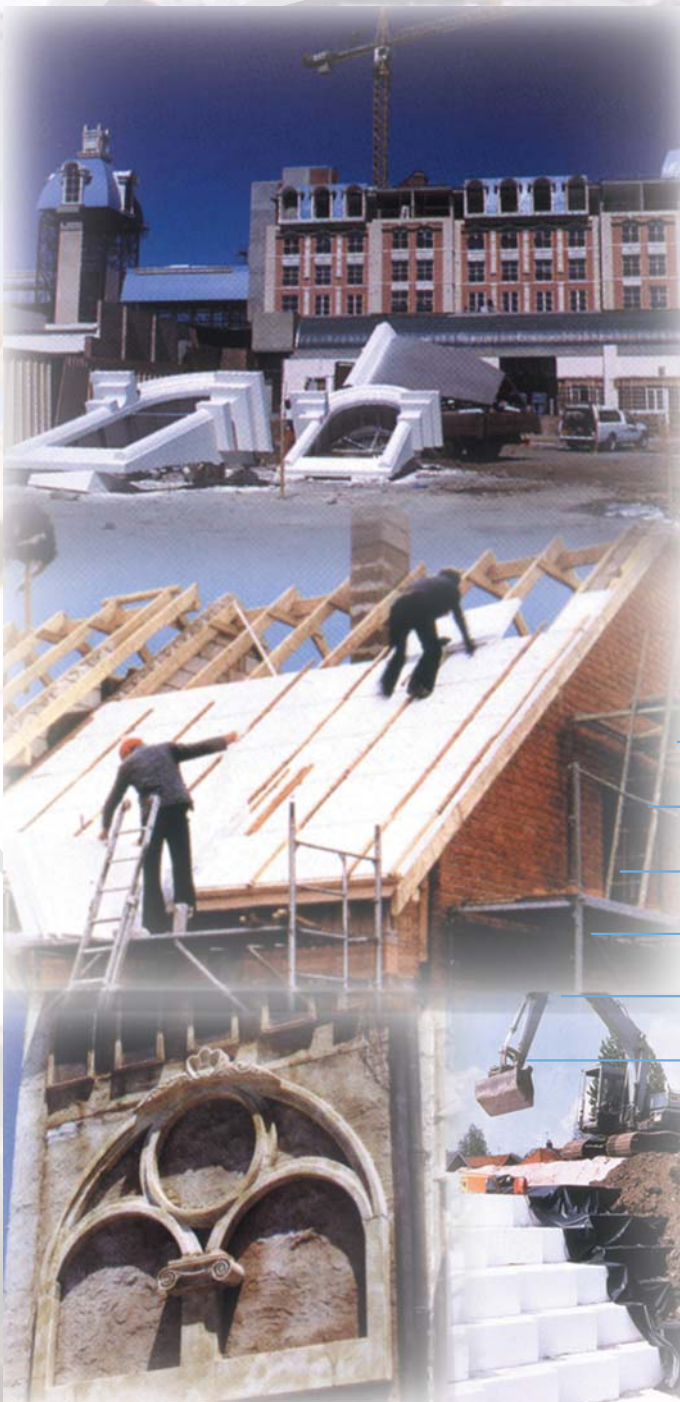
Waterproofing

Building Blocks

Cornices

Form Work

Walling Systems



EPS's lightweight, strength and thermal characteristics provide a range of economic high performance products for the construction industry.

When used and installed correctly EPS does not deteriorate with age and therefore maintains its insulation value over the entire life of the building.

Produced in a wide range of densities, EPS can be manufactured to match various application requirements through optimising its performance and strength characteristics.

EPS is an inert organic material and is therefore resistant to mildew and provides no nutritive value to plants, animals, micro-organisms and rodents.

EPS is fully recyclable, and the use of EPS does not generate any risk to health or the environment.



EPSASA represents the Expanded Polystyrene Industry in South Africa and aims to inform and educate all on the benefits, versatility and environmentally friendly nature of Expanded Polystyrene. EPSASA is a member of AAAMSA.



1st Floor, Block 4  
Construction Park  
234 Alexandra Avenue  
Midrand  
PO Box 7861  
Halfway House 1685  
Tel: 011 805 5002  
Fax: 011 805 5033  
E-mail: [aaamsa@iafrica.com](mailto:aaamsa@iafrica.com)  
[www.aaamsa.co.za](http://www.aaamsa.co.za)